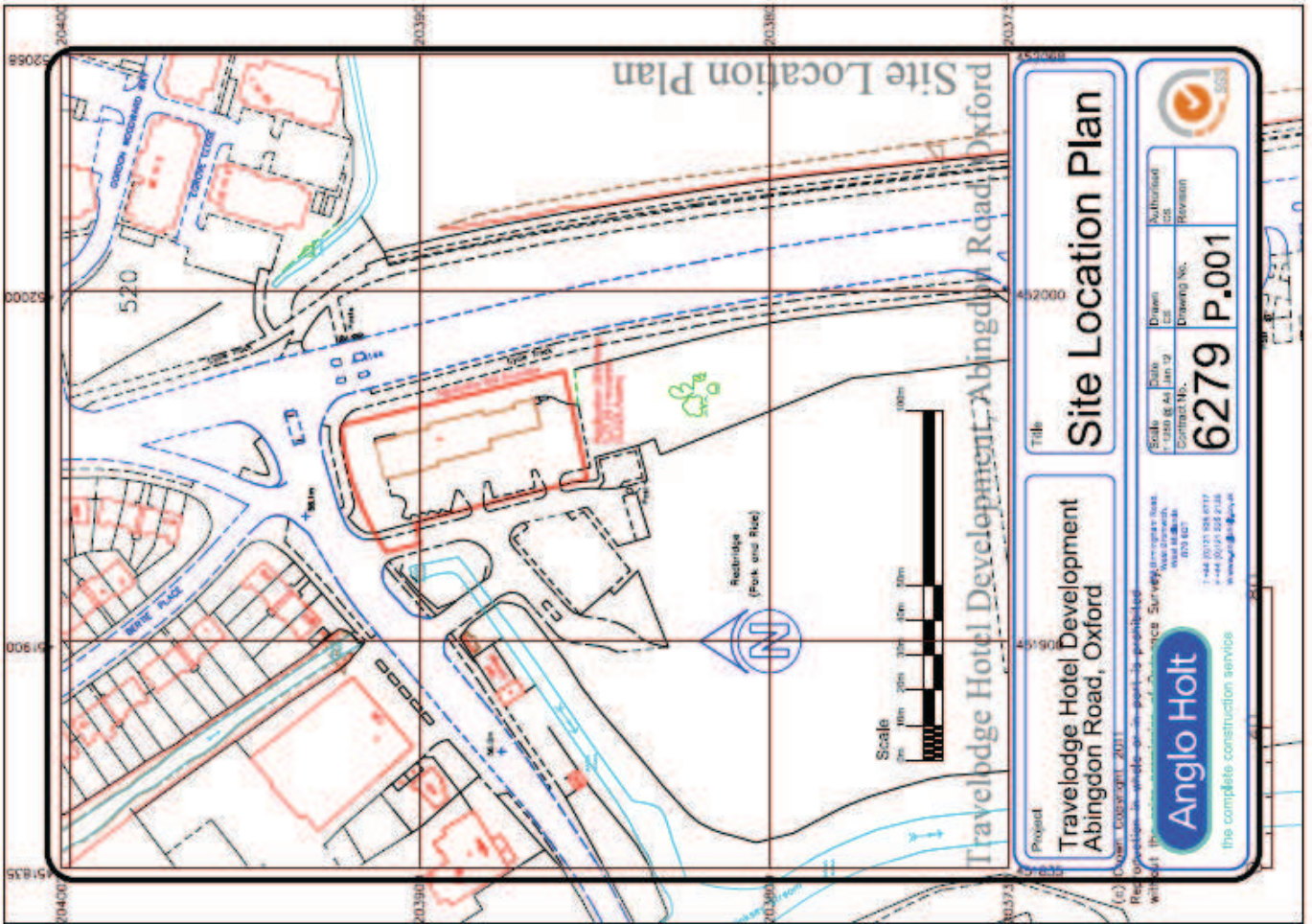




Welcome to the West Area Planning Committee

- **This planning committee meeting is held in public, but it is not a public meeting.**
- **There will be opportunity for the public to address the committee on each application.**
- **If you wish to speak for or against a planning application, you will need to have either requested it in advance, or fill out and hand in one of the available speaker forms.**
- **Information on meeting protocol and conduct at committee is set out in the Code of Practice.**
- **You can find a copy of the Code of Practice in the committee agenda, just before the first planning application report.**



Viewed from the North



Viewed from North - East



Viewed from the East



Viewed from South - East



Viewed from the South



Viewed from the South



Access from Old Abingdon Road



Access from Old Abingdon Road



Viewed from Park & Ride to South



Bathroom Warehouse from South

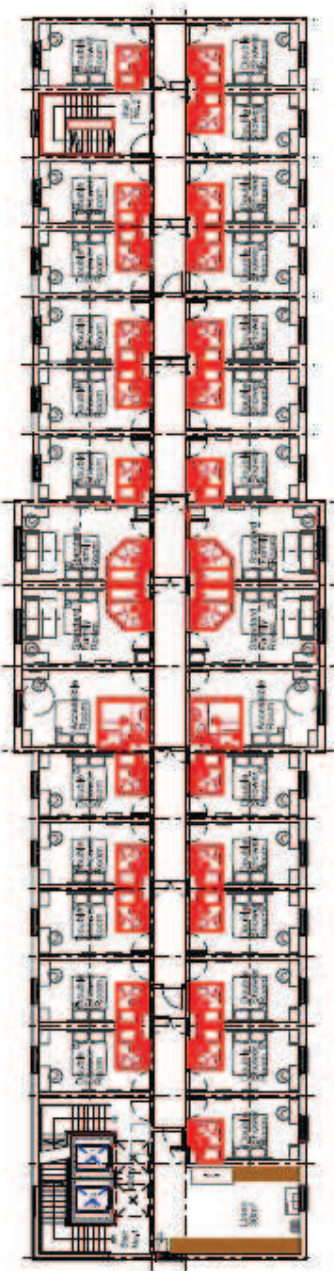




Rev	Date	Description
1		

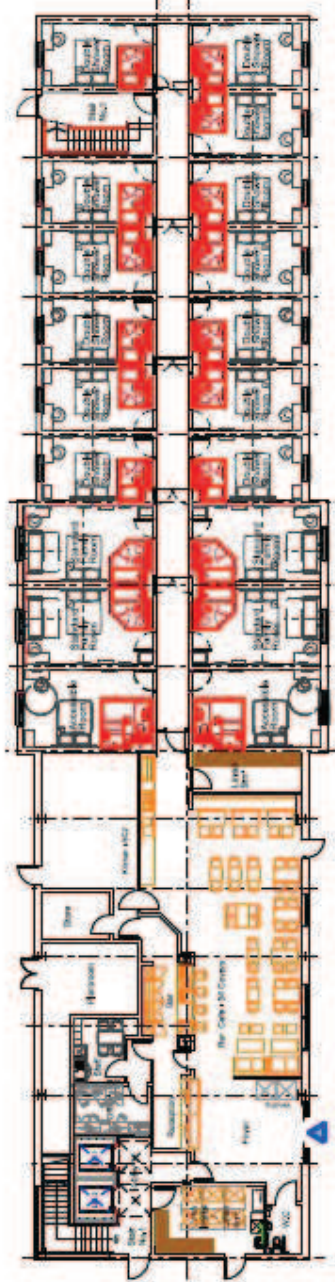
Ground and First Floor Layout Plans

First Floor Plan



GROUND FLOOR ROOM MATRIX	
ACCESSIBLE	= 2
DOUBLE SHOWER	= 3
FAMILY	= 4
TOTAL	= 9
FIRST FLOOR ROOM MATRIX	
ACCESSIBLE	= 2
DOUBLE SHOWER	= 24
FAMILY	= 4
TOTAL	= 30
SECOND FLOOR ROOM MATRIX	
ACCESSIBLE	= 2
DOUBLE SHOWER	= 24
FAMILY	= 4
TOTAL	= 30
THIRD FLOOR ROOM MATRIX	
ACCESSIBLE	= 2
DOUBLE SHOWER	= 4
TOTAL	= 6
GENERAL ROOM MATRIX	
ACCESSIBLE	= 4 (5%)
DOUBLE SHOWER	= 86 (76%)
FAMILY	= 14 (17%)
TOTAL	= 51

Ground Floor Plan



Anglo Holt

The complete construction services
 management and cost management
 team for your project

6279	P.004
------	-------

Project:
 Travelodge Hotel Development
 Abingdon Road, Oxford

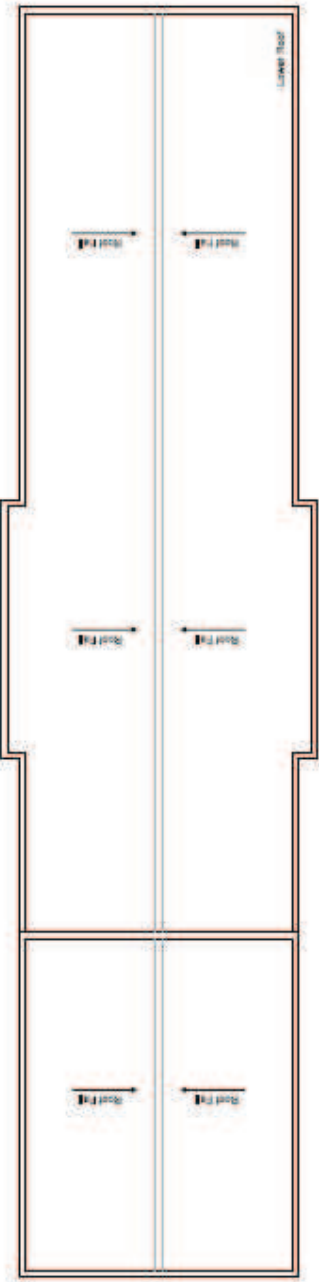
Ground and First
 Floor Layout Plans



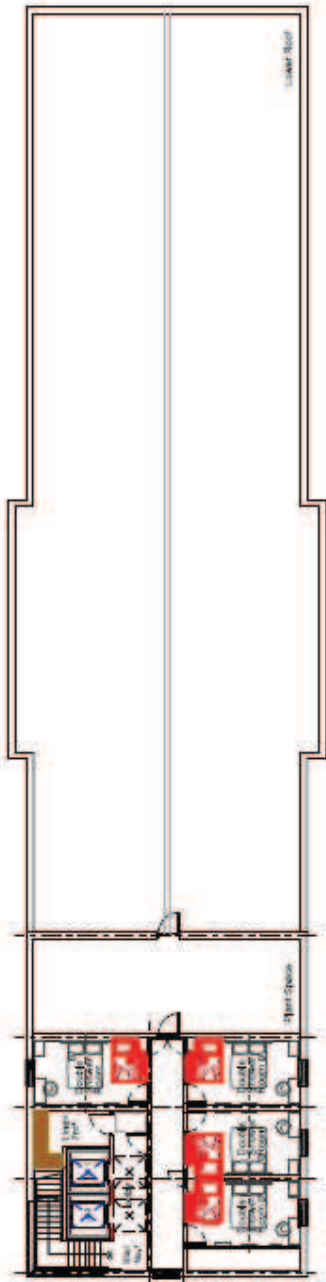
Travelodge Hotel Development, Abingdon Road, Oxford

Second, Third Floor and Roof Layout Plans

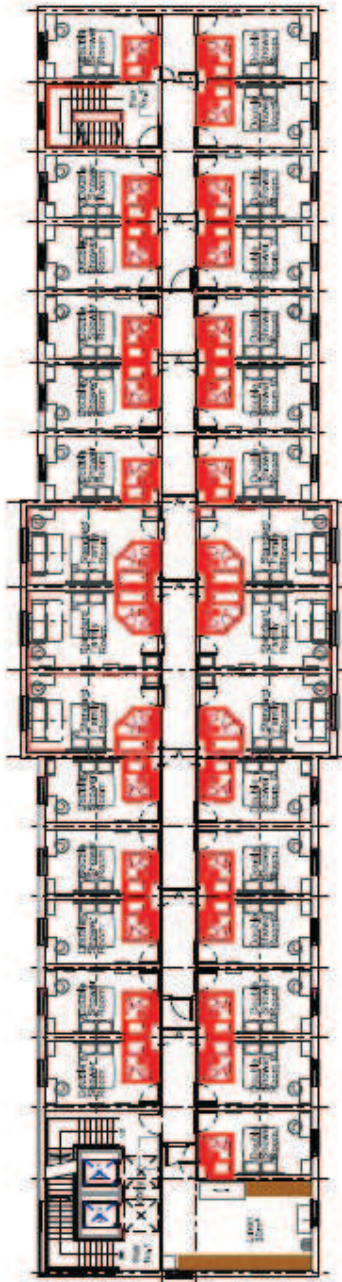
Roof Plan



Third Floor Plan



Second Floor Plan



GROUND FLOOR ROOM MATRIX	
ACCESSIBLE	+2
DOUBLE SHOWER	-13
FAMILY	+4
TOTAL	-7
FIRST FLOOR ROOM MATRIX	
ACCESSIBLE	+2
DOUBLE SHOWER	-24
FAMILY	+4
TOTAL	-20
SECOND FLOOR ROOM MATRIX	
ACCESSIBLE	-0
DOUBLE SHOWER	+24
FAMILY	-6
TOTAL	+18
THIRD FLOOR ROOM MATRIX	
DOUBLE SHOWER	+4
TOTAL	+4
OVERALL ROOM MATRIX	
ACCESSIBLE	-4 (5%)
DOUBLE SHOWER	+65 (70%)
FAMILY	-14 (17%)
TOTAL	+47

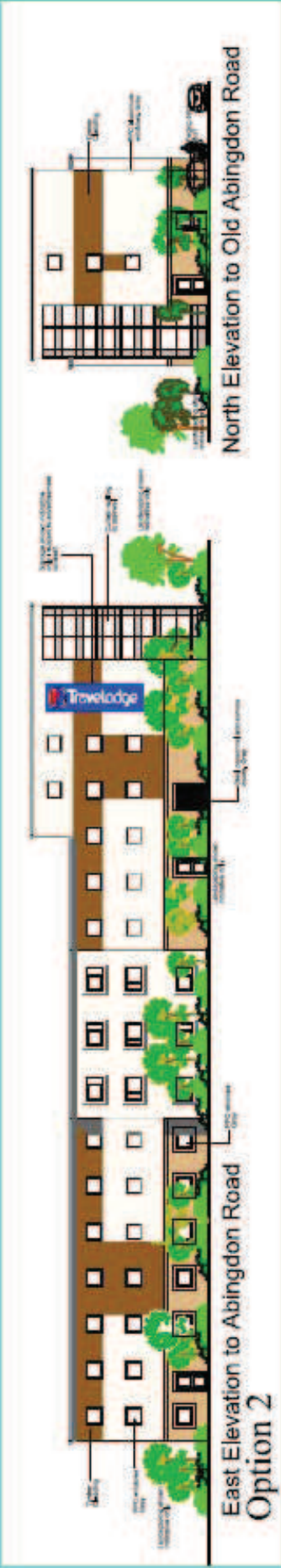
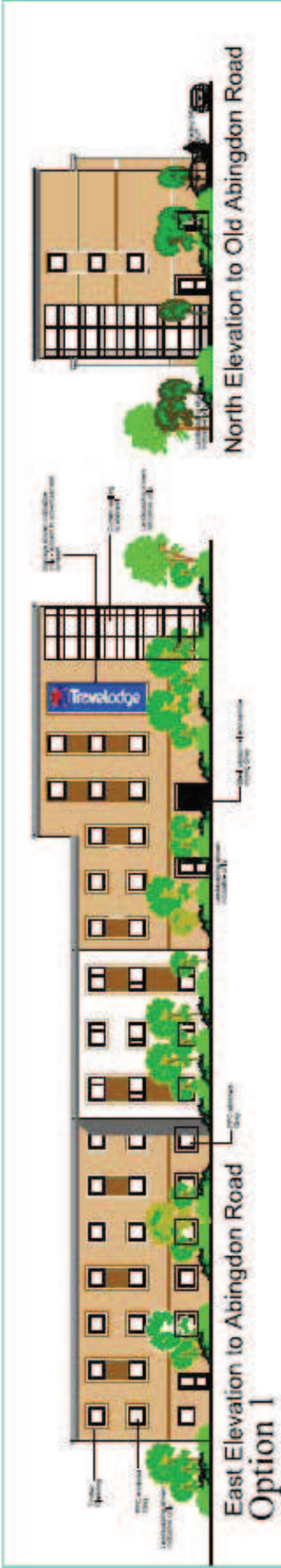
Anglo Holt
 Travelodge Hotel Development
 Abingdon Road, Oxford

the specialists in construction services
 115, Abingdon Road, Oxford, OX1 1DF
 Tel: 01235 831111 Fax: 01235 831118
 www.anglo-holt.co.uk

6279 P.005
 12/2018



Travelodge Hotel Development, Abingdon Road, Oxford



Option 1



This CGI has been prepared for illustrative purposes only and does not form part of any formal planning submission documentation or is to be referred to in any planning notices etc.

Option 2

STYLING: ANDREW ADAMS
ARCHITECTURE



West Elevation to Park and Ride



East Elevation to Abingdon Road

West and East Elevations - Option 2

Project: Travelodge Hotel Development
Abingdon Road, Oxford

West and East Elevations - Option 2

Anglo Holt
the complete construction service

6279 P.0006.2

Scale: 1:500

DATE: 12/11/11

PROJECT: TRAVELODGE HOTEL DEVELOPMENT

DATE: 12/11/11

PROJECT: TRAVELODGE HOTEL DEVELOPMENT

DATE: 12/11/11



Travelodge Hotel Development, Abingdon Road, Oxford

Option 2



This CGI has been prepared for illustrative purposes only and does not form part of any formal planning submission documentation or is it to be referred to in any planning notices etc.

Option 3

STYLED ARCHITECTURAL ELEVATION (NOT TO SCALE)



West Elevation to Park and Ride



East Elevation to Abingdon Road

West and East Elevations - Option 3



Travelodge Hotel Development, Abingdon Road, Oxford

Travelodge Hotel Development
Abingdon Road, Oxford

West and East Elevations - Option 3

Anglo Holt
the complete construction service

100, High Street, Oxford, OX1 1DB
Tel: 01865 200000

Project No.	6279
Revision	P.006.3

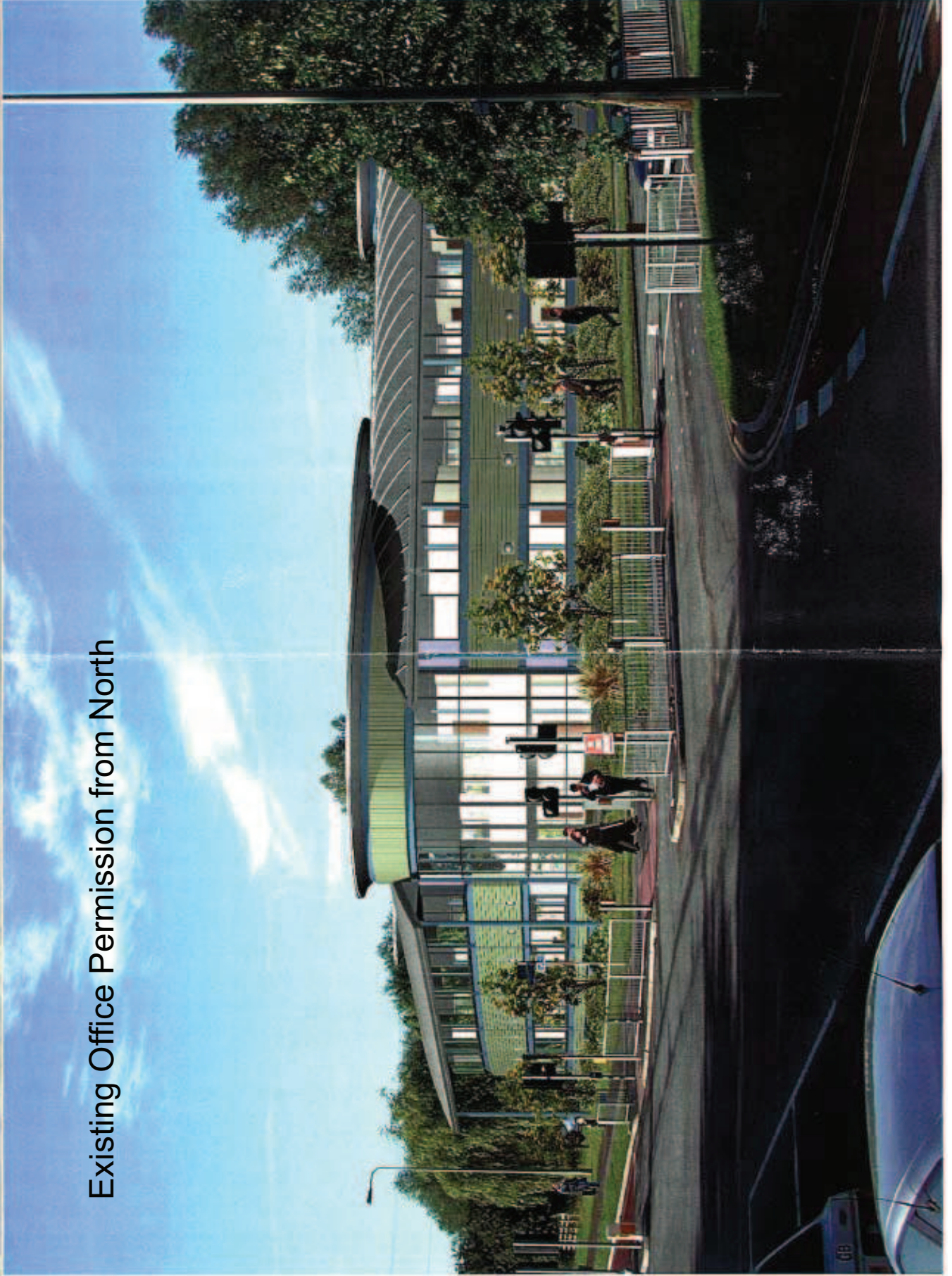
DATE: 12/11/14

Option 3

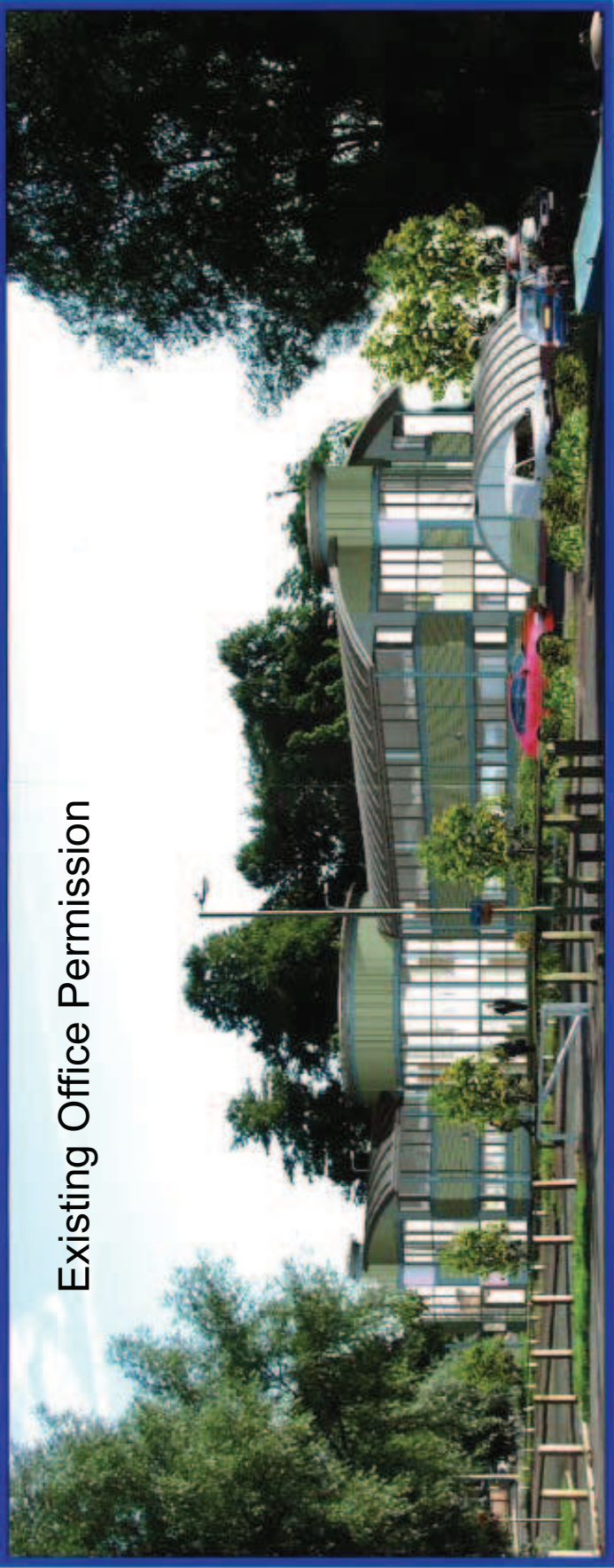


This CGI has been prepared for illustrative purposes only and does not form part of any formal planning submission documentation or is to be referred to in any planning notices etc.

Existing Office Permission from North



Existing Office Permission

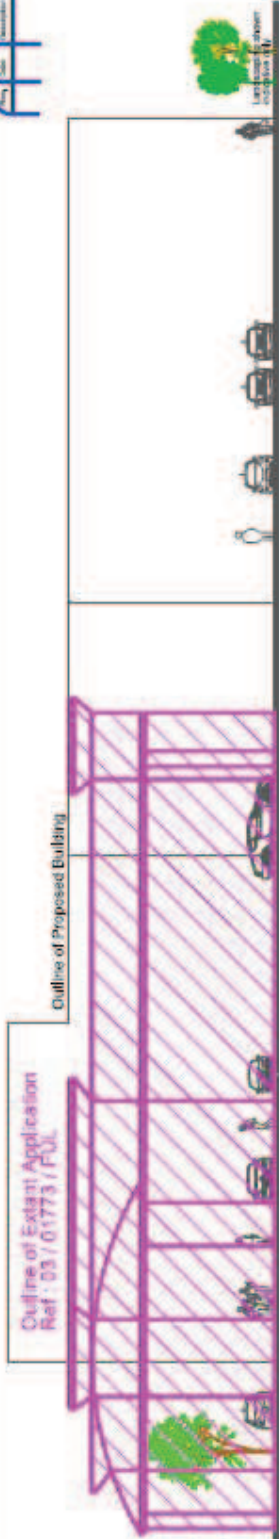


View from the Park and Ride

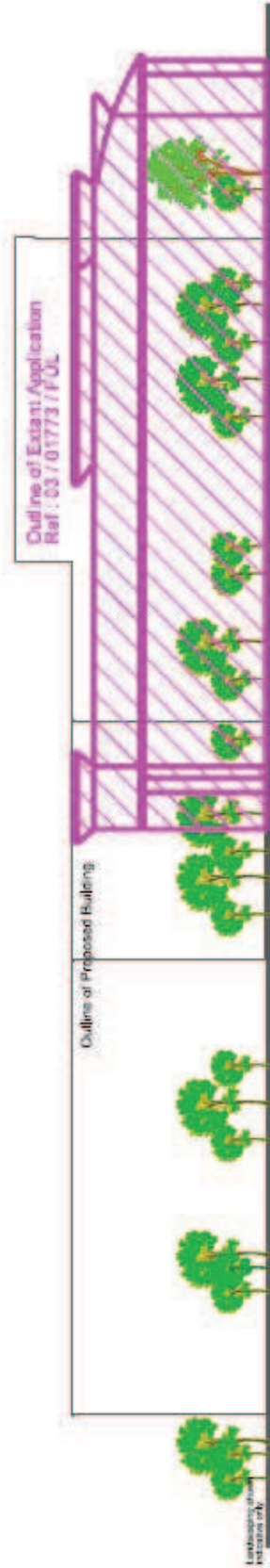


View north along Abingdon Road

Key	Description
[Symbol]	[Symbol]
[Symbol]	[Symbol]



West Elevation to Park and Ride



East Elevation to Abingdon Road



South Elevation

North Elevation to Old Abingdon Road



Travelodge Hotel Development, Abingdon Road, Oxford

Project: Travelodge Hotel Development
Abingdon Road, Oxford
Title: Extant Application and
Proposed Overlay Elevations



6279	P.009
------	-------

Ref.	Size	Description
1		
2		
3		
4		
5		
6		
7		
8		
9		
10		
11		
12		
13		
14		
15		
16		
17		
18		
19		
20		
21		
22		
23		
24		
25		
26		
27		
28		
29		
30		
31		
32		
33		
34		
35		
36		
37		
38		
39		
40		
41		
42		
43		
44		
45		
46		
47		
48		
49		
50		

Application Site Boundary

Outline of Extant Application
Ref: 03/01779 / FUL

Outline of Proposed Building

Old Abingdon Road

Project:
Travelodge Hotel Development
Abingdon Road, Oxford

Site:
Extant Application and Proposed
Site Layout Overlay Plan

Anglo Holt
The complete construction services
management was created and delivered
by Anglo Holt.

Ref.	Size	Description
1		
2		
3		
4		
5		
6		
7		
8		
9		
10		
11		
12		
13		
14		
15		
16		
17		
18		
19		
20		
21		
22		
23		
24		
25		
26		
27		
28		
29		
30		
31		
32		
33		
34		
35		
36		
37		
38		
39		
40		
41		
42		
43		
44		
45		
46		
47		
48		
49		
50		



Travelodge Hotel Development, Abingdon Road, Oxford